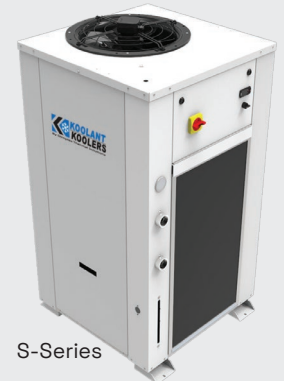


# BREW WITH CONFIDENCE

Specialty Chillers for:  
Brewery, Winery, Distilleries  
& Cold Neck Applications



S-Series



J-Series

## Closed Loop or Flow Through for Low Temperatures

Koolant Coolers has been synonymous with tailoring products for the unique needs of applications for over 70 years. Offering both indoor and outdoor models, these chillers offer consistent water temperatures and designs capable of cooling as low as 28°F. From micro breweries to large commercial breweries, our chillers are designed to meet your changing cooling needs with expandable platforms and a special chiller buy-back program.

### DESIGN FEATURES

- Air-Cooled Condenser, Closed Loop
- Indoor and Outdoor Models
- Water/Glycol
- Ambient Temperature Range -20–120°F
- Hermetic Scroll Compressors
- Centrifugal Pumps
- Hot Gas Freeze Protection
- Insulation

### CHILLER OPTIONS

- Fluid Filter
- Anti-Backflow Kit
- Float Switch
- On-Board Diagnostics
- Remote Controller
- Modular Design with Redundancy
- Powder Coat Galvanized Finish

### THE DTS DIFFERENCE

- Built to UL 1995 standards
- Industry leading 18-Months Parts and Labor Warranty
- 24/7 Global Technical Service and Support
- Next Day Parts Available on Most Models

MODEL	BTU/HR SETPOINT (95°F AMBIENT)	ELECTRICAL +/- 10%	FLA	INLET/OUTLET PORT SIZE	TANK CAPACITY	PUMP			CRATED WEIGHT
INDOOR	28°F	VOLTS	AMPS	INCH	GAL	HP	GPM	STD PSI	LBS
JHI-1000-M	2,070	230/1/60	14.9	1/2	10	1	10	35	530
	2,700	230/3/60	12.5						
	2,700	460/3/60	6.1						
JHI-1500-M	5,670	230/1/60	21.2	1/2	10	1	10	35	570
	5,760	230/3/60	15.7						
	5,760	460/3/60	7.5						
JHI-2000-M	6,390	230/1/60	27.9	1/2	10	1	10	35	645
	8,550	230/3/60	20.3						
	8,550	460/3/60	10.0						
OUTDOOR									
SVO-3002-M	21,600	460/3/60	14.8	1 1/2	36	2	10	25	1,100
		230/3/60	30.0						
SVO-5002-M	36,000	460/3/60	19.8	1 1/2	36	2	15	25	1,100
		230/3/60	39.0						
SVO-7502-M	49,000	460/3/60	22.8	2	60	2	25	25	1,600
SVO-10002-M	61,000		26.9	2	60	3	30	25	1,600
SVO-15002-M	93,000		44.2	2	86	5	50	25	2,550
SVO-20002-M	124,000		52.2	2	86	5	60	25	2,550
OUTDOOR									
AVO-5002-PS	36,000	230/3/60	29.0	3	180		15	20	
		460/3/60	19.8						
AVO-7502-PS	49,000	460/3/60	22.8	4	300	n/a	25	20	n/a
AVO-10002-PS	61,000		26.9	4	300		30	20	
AVO-15002-PS	93,000		44.2	6	500		45	20	
AVO-20002-PS	124,000		55.2	6	500		60	20	
AVO-30002-PS	216,000		81.0	6	500		90	20	

**JHI units can be used indoors in ambient temperature ranging from 50–95°F.**

JHI units come standard with stainless steel sheet metal, standard pump, pressure relief bypass, hot gas regulator, insulation, and Carel IR temperature controller.

**SVO units can be used outdoors in ambient temperature ranging from -20–95°F.**

**AVO units include pump station and tank to handle up to six modules for future expansion.**

SVO and AVO units come standard with powder coat white galvanized sheet metal, standard pump, manual bypass, hot gas regulator, insulation, Carel temperature controller with remote display, and variable speed controls for fan.

**Options:**

- 1) Fluid Filter**—added inlet water filter housing and 50 micron filter media for filtering the return line from the process.
- 2) Anti Backflow**—prevents backflow to the chiller tank when the chiller is turned off. Used in situations where the chiller is installed below the processing equipment or where overhead piping causes a backflow through the chiller when the unit is turned off.
- 3) Float Switch**—monitors tank fluid level to provide low fluid level warning.
- 4) Stainless Steel Models**—available for indoor applications.

